

# Strecker Ranch

## Scotts Bluff County, Nebraska

This 610.97 Acre combination native grassland and pivot irrigated and flood irrigated farmland is located alongside of County Road B between Morrill and Henry, Nebraska.



There are 58.36 Acres under a 2010 Zimmatic pivot irrigation system currently in Alfalfa.

There are approximately 12 Acres of Alfalfa that is flood irrigated. All of the irrigation water is provided from a 65 Acre adjudicated water right from the Pathfinder Irrigation district. This irrigation water is transferred to the farm through a ditch then into a pond where it is pumped by a 15 horse motor into the pivot system. The farm is composed mostly of sandy loam

soils. The sandier type soils are very productive with adequate fertilizers and timely irrigation.

Adjoining the farmland to the north is approximately 540 Acres of native grassland fenced into one pasture. Stock water is produced from a stock tank and submersible pump. During the summer a good sized pond also provides drinking water for livestock. The combination of cool and warm season grasses provides a lengthy grazing season for all classes of livestock. The current owner has been pasturing from 40 to 50 pairs for the summer grazing season.



Legal Description:

**TOWNSHIP 23 NORTH, RANGE 58 WEST, SCOTTS BLUFF CO., NE**

**Section 1: Pt S2 [298.66 Ac] Grassland**

**Section 2: S2NE, E2SE [160 Ac] Grassland**

**Section 2: E2SW W2SE (Ex 7.69 Ac in SESWSE) [152.31 Ac] Farm  
with pivot and Grassland.**

Scotts Bluff County Real Estate Taxes: \$5,113.26

Pathfinder Irrigation District (PID) Annual Assessment: \$2,015.00

Electric charges: Annual Demand Charge: \$460.00 (one time annual charge)  
2019 Electric charges for pivot: \$2,614.00.

Currently there are approximately 58.36 Acres under pivot which is growing Alfalfa and 12 Acres in an established stand of Alfalfa that is flood irrigated on the farm portion of the Ranch.

Listing price for both units: \$400,000.00.

Listing Agent: Bob Van Newkirk cell 307-532-1596

**Premier Properties**

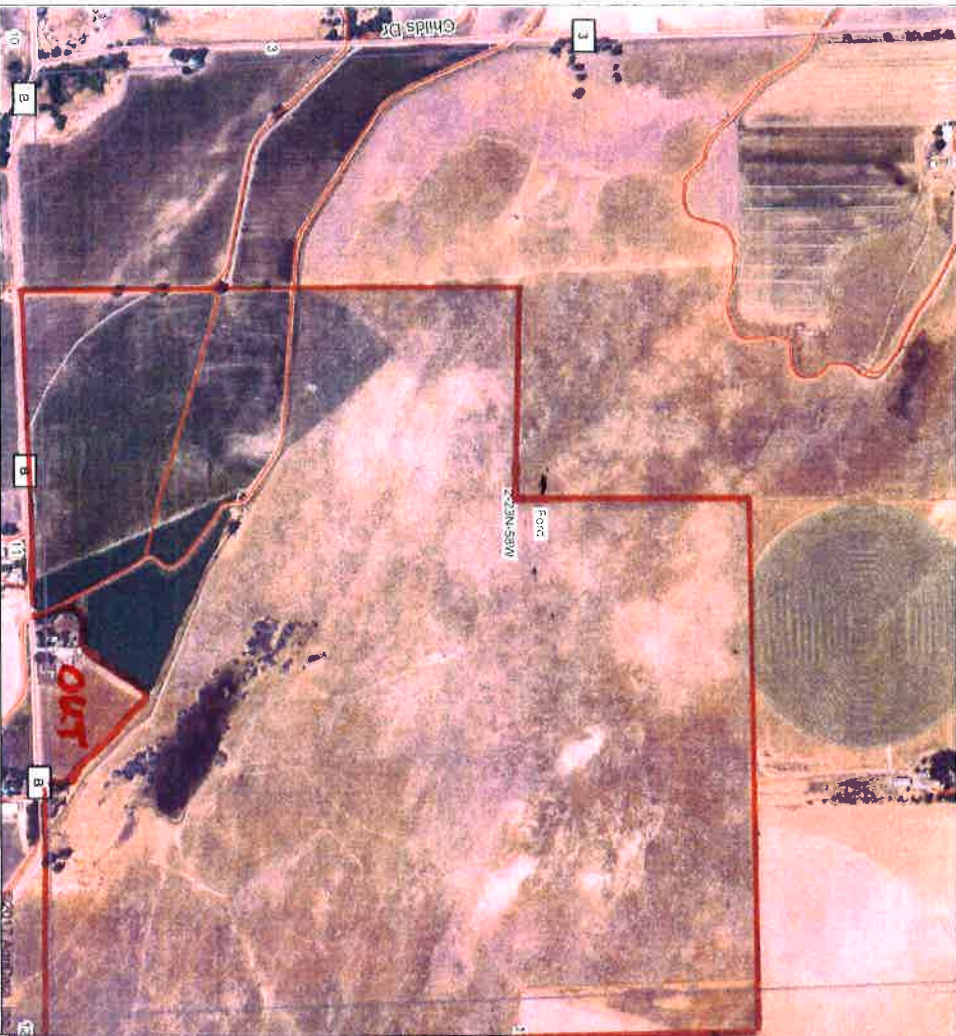
**1942 East D Street  
Torrington, Wyoming**

**Phone 307-532-4447**

*[www.wyo-realestate.com](http://www.wyo-realestate.com)*

**Co-listed with Jerry Sloan of [sloanagland.com](http://sloanagland.com)  
Scottsbluff, NE**





Premier Properties

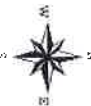
1425 Lusk St, Suite 100  
Lincoln, NE 68502  
352.55.4444



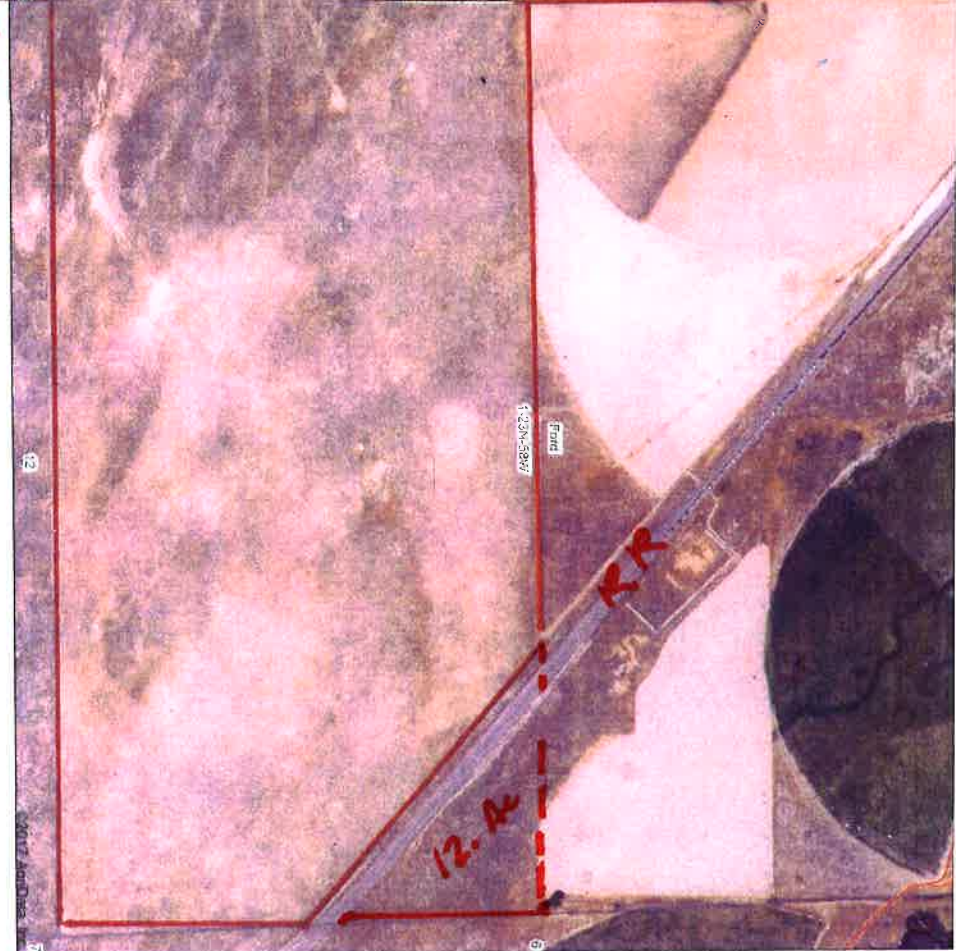
2-23N-58W  
Scotts Bluff County  
Nebraska

map center: 41° 59' 40.08", -104° 1' 4.74"

scale: 9479



9/22/2017



Premier Properties

1425 Lusk St, Suite 100  
Lincoln, NE 68502  
352.55.4444



1-23N-58W  
Scotts Bluff County  
Nebraska

map center: 41° 59' 39.81", -103° 59' 54.76"

scale: 9318



9/22/2017